

DHH announces plans to integrate behavioral health services into Medicaid managed care plans

*Currently provided through the Louisiana Behavioral Health Partnership (LBHP), specialized behavioral health services will be incorporated into Bayou Health by 2016.*

**Louisiana's Department of Health & Hospitals** (DHH) has announced it will integrate specialized behavioral health services into the benefits coordinated by Bayou Health plans for more than 920,000 Medicaid recipients.

[See more details here.](#)

**Blast from the Past** *See page 3*

## MemberTalk

"In this vacillating healthcare industry of ours where change is more prevalent than ever, I have a sincere appreciation and gratitude for my colleagues of MGMA Louisiana, a group of managers and friends who offer wisdom and a sense of awareness in knowing you are not an island. You are not alone. Thank you MGMA Louisiana for your dedication to keep the medical managers of our state informed, united and connected."

Jeri L. Quinn, CMM *Lake Charles Anesthesiology*



ACMPE Fellows Dinner: MGMA members from throughout the U.S. gathered in Las Vegas last month for the annual conference which also featured activities for the American College of Medical Practice Executives. Tom Baggett, FACMPE (left) and Lisa Conner, FACMPE (center) enjoyed a visit with Dr. Bill Jesse, FACMPE, and past CEO of MGMA national.

CHRISTUS MANAGER Job opening  
Texarkana TX

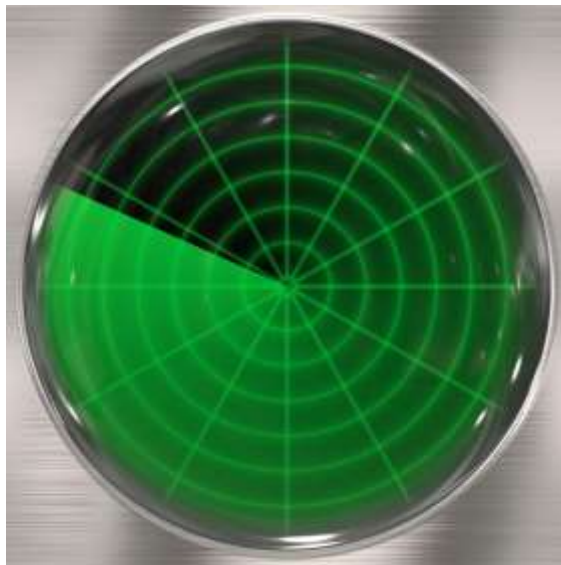
[See details here](#)

MEMBERSHIP  
RENEWAL  
JOIN/RENEW  
ONLINE at  
[www.lmgma.org](http://www.lmgma.org)

## Bayou Health settlement reached

*Federal judge to oversee compliance*

Louisiana's DHH has settled a federal class-action lawsuit over the inadequacy of notices sent by DHH and Bayou Health insurance companies to Medicaid recipients. [See story and details here.](#)



## Medicare participation decision period now

All physicians, practitioners and suppliers must make their CY 2015 Medicare participation decision by Dec. 31, 2014.

Providers wishing to maintain their current participation status do not need to take any action.

To understand participation options, [click here](#)

## Five things you do/don't owe

Back in the old days there were working hours. You went to work and then around five p.m., you packed up your stuff and went home. If there were an emergency you might stay until five-thirty. [Read this great article](#) by Liz Ryan, CEO and founder of Human Workplace.

## Your skills can affect patient care

Administrators can affect patient care with the right leadership skills. This MGMA article tells how you can "empower your staff to reach your organization's goals by setting the right example and making your employees feel heard." [Learn more here](#)

## ARNP agreements: legal impact

An article featured in the current issue of Lammico's newsletter, points out, "The use of nurse practitioners and other advanced practice registered nurses (APRNs) is significantly on the rise." As physicians enter into these agreements they should be aware of legalities; a recent Louisiana legal case is detailed. [Read it here](#)



# LOWRY'S

PRINTING · COPYING · SIGNS

Thinking Ink Since 1981



**POS** Professional Office Services, Inc.  
Your Partner in Patient Communication

**POS**® is your partner in patient communication. From **digital** and **print collateral**, to **patient statement processing** and **automated messaging**, **POS**® helps you enhance the **patient experience** through improved **patient communication**.

**Looking to improve your practice's A/R?** Contact **POS**® for a complimentary consultation and improved patient statement proof.

800.331.4976 | [www.poscorp.com](http://www.poscorp.com) | [in](#)

YOUR AD RIGHT HERE—CALL US  
FOR DETAILS 337-984-9777

OR EMAIL US [info@lmgma.org](mailto:info@lmgma.org)



Louisiana

WE'VE GOT YOU  
**COVERED.**

WWW.BCBSLA.COM



**It's BAYOU COUNTRY** at this table! Shown at the 2009 conference at L'Auberge Resort in Lake Charles are (l-r) Angie Briley, Christie Larose, Crystal Williams and Kim Beetz.

